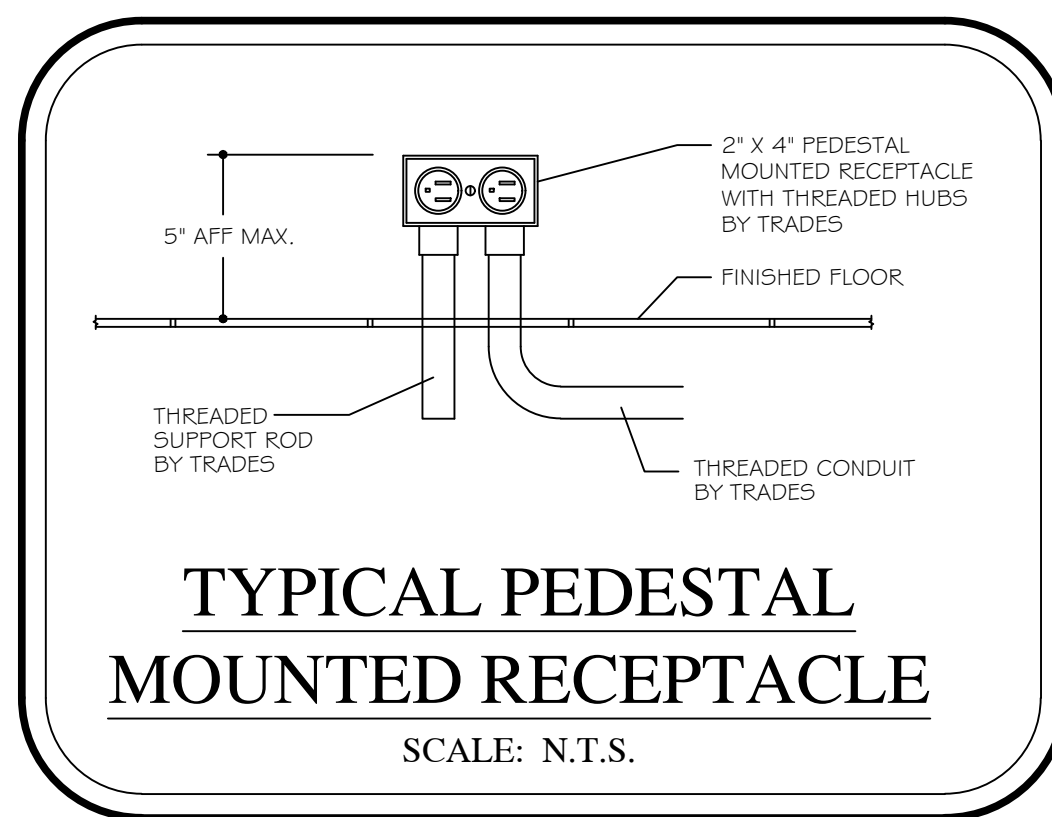


EQUIPMENT SCHEDULE								
Item	EQUIPMENT DESCRIPTION	VOLTS	PH	AMPS LOAD	DIRECT BY EC	CORDSET BY FSEC	AFF (in)	REMARKS
101	WALK-IN FREEZER	120	1	8.0	X		DFA	TRADES WIRE TO JB FOR LIGHTS, DOOR HEATER
102	WALK-IN COOLER	120	1	8.0	X		DFA	TRADES WIRE TO JB FOR LIGHTS, DOOR HEATER
203	HOT FOOD CABINET	120	1	12.0		X	72	
301	RAPID COOK OVEN	208	3	30.0		X	48	
302	REFRIGERATOR	120	1	4.9		X	90	
302A	REFRIGERATOR	120	1	4.9		X	90	
401	DROP-IN HOT WELLS	208	1	20.0	X		5	PEDESTAL MOUNTED JUNCTION BOX BY TRADES
401A	SNEEZE GUARD	120/208	1	12.2	X		5	PEDESTAL MOUNTED JUNCTION BOX BY TRADES
403	DROP-IN COLD WELL	120	1	3.1		X	5	PEDESTAL MOUNTED RECEPTACLE BY TRADES
403A	SNEEZE GUARD	120	1	1.0	X		5	PEDESTAL MOUNTED JUNCTION BOX BY TRADES
404	DROP-IN HOT/COLD WELLS	120	1	18.2		X	5	PEDESTAL MOUNTED RECEPTACLE BY TRADES
404A	SNEEZE GUARD	120	1	1.0	X		5	PEDESTAL MOUNTED JUNCTION BOX BY TRADES
407	CASH REGISTER/POS - BY OWNER	120	1	10.0		X	FLUSH	INTERWIRE TO OFFICE/CPU - VIF
408	DROP-IN HEATED SURFACE	120	1	8.3		X	5	PEDESTAL MOUNTED RECEPTACLE BY TRADES
409	HEATED SLANTED SANDWICH SLIDE	120/208	1	14.1		X	5	PEDESTAL MOUNTED RECEPTACLE BY TRADES
410	DECORATIVE HEAT LAMP ASSEMBLY	120	1	6.0	X		DFA	
412	DROP-IN COLD WELL	120	1	3.1		X	5	PEDESTAL MOUNTED RECEPTACLE BY TRADES
412A	SNEEZE GUARD	120	1	1.0	X		5	PEDESTAL MOUNTED JUNCTION BOX BY TRADES
413	SANDWICH TOP REFRIGERATOR	120	1	4.8		X	5	PEDESTAL MOUNTED RECEPTACLE BY TRADES
414	AIR CURTAIN REFRIGERATOR	120	1	16.0		X	5	IF UNIT CANNOT BE CONNECTED TO GFCI BREAKER, THEN IT MUST BE HARD WIRED
414A	DOUBLE SIDED AIR CURTAIN	208	1	14.2		X	5	IF UNIT CANNOT BE CONNECTED TO GFCI BREAKER, THEN IT MUST BE HARD WIRED
604	MICROWAVE OVEN	120	1	13.4		X	72	
605	REFRIGERATED DISPLAY CASE	120	1	6.2		X	16	
607	CASH REGISTER/POS - BY OWNER	120	1	10.0		X	16	INTERWIRE TO OFFICE/CPU - VIF
609	HEATED SLANTED SANDWICH SLIDE	120	1	6.5		X	48	
610	ICE CREAM DISPLAY FREEZER	120	1	4.8		X	16	
611	HOT FOOD CABINET	120	1	12.0		X	72	
EGP3	GENERAL PURPOSE DUPLEX	120	1	10.0		X	48	
EGP4	GENERAL PURPOSE DUPLEX	120	1	10.0		X	16	

NOTE:

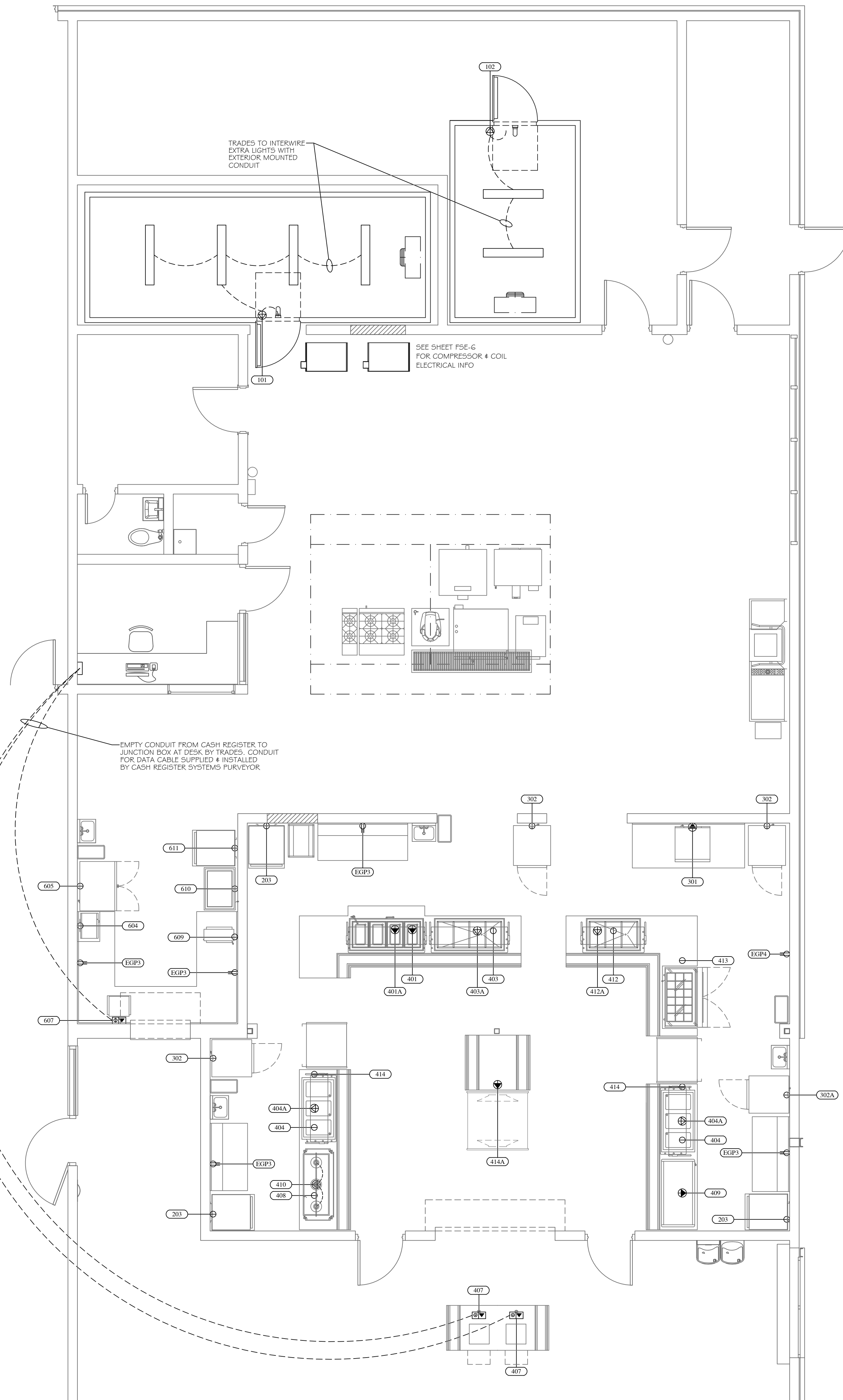
- FSEC SHALL VERIFY ROUGH-IN REQUIREMENTS FOR FUTURE, PURVEYOR SUPPLIED, OWNERS RELOCATED EQUIPMENT, OWNER SUPPLIED EQUIPMENT, ETC.
- TRADES TO REUSE EXISTING ROUGHINS WHERE APPLICABLE.
- TRADES SHALL DISCONNECT, REMOVE, STORE & RECONNECT ANY EXISTING EQUIPMENT AS REQUIRED FOR CONSTRUCTION PURPOSES.
- EQUIPMENT NOT BEING REUSED TO BE DISCONNECTED BY TRADES AND STORED OR DISCARDED BY THE FSEC AS DIRECTED BY OWNER.
- EQUIPMENT DESIGNATED AS RELOCATED SHALL BE DISCONNECTED BY THE TRADES AND RELOCATED BY THE FSEC AS PER PLANS AND SPECIFICATIONS.



TRADE & FSEC NOTES:

- KITCHEN EQUIPMENT SHALL BE DELIVERED AND ERECTED BY F.S.E.C.
- DO NOT ROUGH-IN FROM THIS DRAWING. REFER TO F.S.E.C. DIMENSIONED ROUGH-IN DRAWINGS AND SHOP DRAWINGS FOR ACTUAL REQUIREMENTS.
- TRADES SHALL MAKE ALL FINAL CONNECTIONS BETWEEN EQUIPMENT AND ROUGH-IN POINT, AND FURNISH ALL WIRING, SWITCHES, CONTROLS, SERVICE VALVES, PIPING, ETC AS REQUIRED. FSEC SHALL FURNISH DRAIN WATER TEMPERING KIT(S), TRADES SHALL INSTALL.
- FSEC SHALL FURNISH AND TRADES SHALL INSTALL ALL ACCESSORIES (FAUCETS, SWITCHES, CORDS, VALVES, GAS HOSES, ETC.).
- SLOPES TO FDS SHOULD BE HELD TO A MINIMUM DIMENSION.
- ALL "ROUGH-INS" SHOULD BE "UP-WITHIN" AND THEN "OUT-OF" WALLS WHERE POSSIBLE TO KEEP FLOORS AS CLEAN AS POSSIBLE. ROUGH-INS ARE SHOWN AT TERMINATION POINT TO ALLOW WIRING/PIPING TO FEATURE BY TRADES.
- TRADES TO PROVIDE CHASES/REWORK OF WALLS, FLOORS, CEILINGS FOR UTILITIES, FLOOR GRATES, WALKING, DUCTS, ETC.
- F.S.E.C. SHALL PROVIDE ACCESS HOLES IN EQUIPMENT FOR UTILITIES, PIPING, POS, BEVERAGE LINES, ETC.
- TRADES SHALL PROVIDE VENTILATION STRUCTURAL SUPPORT, CEILING WORK, ROOF PENETRATIONS AND FIRE PROOFING AS REQUIRED.
- EXHAUST HOOD SHALL BE USED FOR VENTILATION OF COOKING EQUIPMENT ONLY. TRADES SHALL PROVIDE ROOM VENTILATION (AVC RECOMMENDED) AS REQUIRED.
- TRADES SHALL PROVIDE ADEQUATE VENTILATION FOR REFRIGERATION COMPRESSORS, WHETHER AIR OR WATER COOLED.
- TRADES SHALL REVIEW ALL ROUGHINS AND SHOP DRAWINGS FROM F.S.E.C. AND ADVISE PRIOR TO ROUGHING IN IF ANY CHANGES ARE REQUIRED.
- FSEC SHALL COORDINATE ROUGHIN REQUIREMENTS FOR OWNER SUPPLIED, RELOCATED, OR EXISTING EQUIPMENT WITH ALL TRADES.
- TRADES TO REUSE EXISTING ROUGHINS IF APPLICABLE.
- EQUIPMENT NOT BEING REUSED TO BE DISCONNECTED FROM UTILITIES BY THE TRADES.
- EQUIPMENT NOT BEING RE-USED SHALL BE DISCARDED BY THE FSEC.
- IF OWNER REQUESTS EXISTING EQUIPMENT BE SALVAGED THE FSEC SHALL TURN OVER TO OWNER.
- EQUIPMENT DESIGNATED AS RELOCATED SHALL BE DISCONNECTED FROM UTILITIES BY THE TRADES.
- EQUIPMENT DESIGNATED AS RELOCATED SHALL BE REMOVED FROM SITE, CLEANED, MADE READY FOR HEALTH DEPARTMENT AND RETURNED TO THE SITE BY THE FSEC.
- EQUIPMENT DESIGNATED AS RELOCATED SHALL BE RE-CONNECTED BY THE TRADES.
- TRADES & FSEC TO VERIFY VENTILATION DATA WITH HOOD MFG. SHOP DRAWINGS.

MECHANICAL / ELECTRICAL NOTES	
⊕	120 V - 20 AMP DUPLEX RECEPTACLE - GFCI VERTICALLY MOUNTED
⊕	120 V - 20 AMP SIMPLEX OUTLET - GFCI VERTICALLY MOUNTED
⊕	120 VOLT - 30 AMP QUAD OUTLET
SR	SPECIAL RECEPTACLE - 120 VOLT
SR	SPECIAL RECEPTACLE - 208/240 VOLT
⊕	W.T. FLUSH FLOOR POWER/COMMUNICATIONS RECEPTACLE
⊕	DATA CONNECTION
⊕	WATERTIGHT FLUSH FLOOR DUPLEX - 20 AMP - GFCI
JB	JUNCTION BOX
LT	LIGHT FIXTURE
A	AMPS
AFF	ABOVE FINISHED FLOOR
BTC	BRANCH TO CONNECTION BY TRADES
DFA	DROP FROM ABOVE
GP	GENERAL PURPOSE
HP	HORSEPOWER
IW	INDIRECT/AIR GAPPED WASTE TO FL DR OR FL SK
KW	KILOWATT
PH	PHASE
UN	UNLESS OTHERWISE NOTED
VIF	VERIFY IN FIELD
V	VOLTS
HW	HOT WATER - 25 PSI - 115 DEGREES
CW	COLD WATER - 25 PSI
G	NATURAL GAS - 7" W.C. OR LP GAS - 11" W.C. - VIF
W	WASTE DRAIN - DIRECT CONNECTION
FD	FLOOR DRAIN - 3" MINIMUM DRAIN - MINIMUM PITCH
FFD	FUNNEL FLOOR DRAIN FOR IW - 3" MINIMUM DRAIN
FL SK	FLOOR SINK FOR IW - 12" SQ. - HALF GRATE - 3" MIN.
EVC	EXHAUST VENT CONNECTION
MUA	MAKE UP AIR DUCT CONNECTION
CFM	CUBIC FEET MINUTE
SP	STATIC PRESSURE
BC	BEVERAGE CONDUIT WITH 18" SWEEP ENDS BY TRADES - VIF
TFT	TEMPERED FLOOR TROUGH
NKEC	NOT IN KITCHEN EQUIPMENT CONTRACT



FOODSERVICE
DESIGN BY:

JRA

Food Service
Consultants

JRA FOOD SERVICE CONSULTANTS, LLC
401 HALL STREET SW - SUITE 183H
GRAND RAPIDS, MI 49503
PH: (616) 454-4433

ARCHITECT:
BERGMANN ASSOCIATES
560 5th NW
SUITE 305
GRAND RAPIDS, MI 49504

PROJECT:
ORCHARD VIEW MIDDLE SCHOOL
35 SOUTH SHERIDAN DRIVE
MUSKEGON, MICHIGAN, 49442

SHEET TITLE:
FOOD SERVICE
ELECTRICAL
FLOOR PLAN
SCALE 1/4" = 1'-0"

DATE CODE	PROJECT PHASE	BY
01/31/23 OVMSSE	BIDS	CM

THIS DRAWING IS THE PROPERTY OF JRA FOOD SERVICE CONSULTANTS, LLC AND IS NOT TO BE REPRODUCED, OR REUSED WITHOUT WRITTEN PERMISSION. COPYRIGHT 2023.

SHEET NUMBER:

FSE-4