



ORCHARD VIEW SCHOOL DISTRICT

CARDINAL ELEMENTARY CAFETERIA

ACOUSTICAL TREATMENT

2310 MARQUETTE AVE
MUSKEGON, MI 49442

2/15/2023

PROJECT CONTACT LIST

OWNER:
- ORCHARD VIEW SCHOOLS
- 35 S SHERIDAN DR
MUSKEGON, MI
- CONTACT:
KAYLEIGH MACOMBER
JACK TIMMER

ARCHITECT:
- BERGMANN
- 560 5TH ST NW, SUITE 305
GRAND RAPIDS, MI
- CONTACT: BUDDY HUYLER
- PHONE: 616.848.6969

ELECTRICAL ENGINEER:
- BERGMANN
- 560 5TH ST NW, SUITE 305
GRAND RAPIDS, MI
- CONTACT: ANGELA ROBINSON
- PHONE: 517.827.8726

MECHANICAL ENGINEER:
- ABILITY MEP LLC
- 5210 WEST RIVER DR NE, SUITE C
COMSTOCK PARK, MI
- CONTACT: CHRIS NOLAN
- PHONE: 616.232.5817

DRAWING INDEX

00 - GENERAL	
G000	COVER SHEET
04 - ARCHITECTURAL	
A001	GENERAL NOTES AND LEGENDS
A002	GENERAL REQUIREMENTS
AD101	FIRST FLOOR AND CEILING DEMOLITION PLANS
A101	FIRST FLOOR AND CEILING PLANS
A102	FIRST FLOOR ENLARGED CEILING PLANS
A141	FIRST FLOOR FINISH PLAN
A421	INTERIOR ELEVATIONS
05 - MECHANICAL	
M001	GENERAL MECHANICAL INFORMATION
M101	FIRST FLOOR MECHANICAL PLANS
08 - ELECTRICAL	
E001	LEGEND
ED101	ELECTRICAL DEMOLITION PLAN
E101	LIGHTING PLANS

CODE REVIEW

PROJECT SCOPE

INTERIOR RENOVATIONS TO EXISTING ELEMENTARY SCHOOL CAFETERIA, CONSISTING OF ACOUSTICAL TREATMENT, REVISED CEILING (INCLUDING LIGHTING AND MINOR MECHANICAL ADJUSTMENTS AS REQUIRED), PAINTING, AND OPTION FOR NEW FLOOR FINISH MATERIAL.

APPLICABLE BUILDING CODES

BUILDING CODE: 2015 MICHIGAN BUILDING CODE
2015 MICHIGAN REHABILITATION CODE
BUILDING CODE (MI FIRE SAFETY STATE RULES): NFPA 11-2012
MECHANICAL CODE: 2015 MICHIGAN MECHANICAL CODE
ELECTRICAL CODE: 2015 NATIONAL ELECTRICAL CODE & MICHIGAN PART 8 ELECTRICAL RULES
ACCESSIBILITY: BARRIER FREE - ICC / ANSI-117

BUILDING DATA

TOTAL BUILDING AREA: 142,550 SQ FT
TOTAL RENOVATION AREA: **4347 SQ FT**
CONSTRUCTION TYPE = **II-B NON-COMBUSTIBLE NON-SPRINKLERED LEVEL 1 (CHAPTER 7)**
ALTERATIONS: NO CHANGE IN OCCUPANCY

USE AND OCCUPANCY

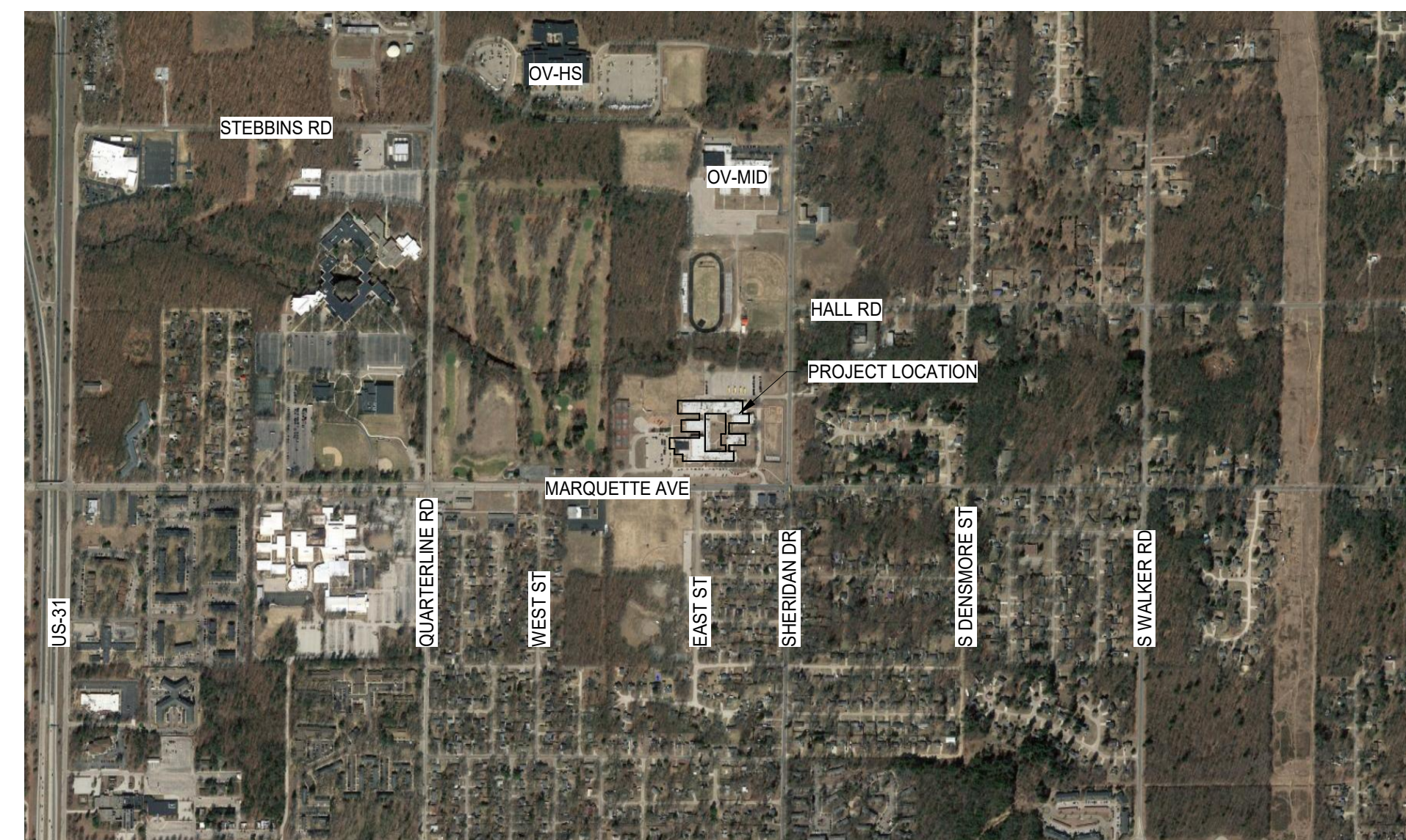
BUILDING IS CLASSIFIED AS "E" EDUCATIONAL
AREAS OF RENOVATION ARE CLASSIFIED AS "A" ASSEMBLY
MBC SECTION 303.3

INTERIOR FINISH

SECTION 803 INTERIOR FINISH AND TRIM: NON-SPRINKLERED TABLE 803.11
INTERIOR FINISHES AND TRIM SHALL MEET FLAME SPREAD, SMOKE DEVELOPED AND CLASS RATINGS AS REQUIRED FOR SPECIFIC USE AND AREA: **A-2**

DATE	DESCRIPTION
1/24/2023	OWNER REVIEW
1/31/2023	BIDS
2/7/2023	PERMITS
2/15/2023	ADDENDUM #1

PROJECT LOCATION MAP



2/13/2023 9:13:40 AM

DRAWING NUMBER

G000

BASIS OF DESIGN	
095113 ACOUSTICAL PANEL CEILINGS	
ACT-1: ACOUSTICAL CEILING TILE 24"x24" MANUFACTURER: ARMSTRONG STYLE: CALLA COLOR: WHITE EDGE: SQUARE LAY-IN 15/16 GRID: PRELUDE XL 15/16" WHITE NOTE: 6" AXIOM TRIM AT CLOUDS - CHARCOAL BLACK	
ACT-2: ACOUSTICAL CEILING TILE 24"x24" MANUFACTURER: ARMSTRONG STYLE: CALLA COLOR: LIGHT GREY EDGE: SQUARE LAY-IN 15/16 GRID: PRELUDE XL 15/16" SILVER SATIN NOTE: 6" AXIOM TRIM AT CLOUDS - CHARCOAL BLACK	
ACT-3: ACOUSTICAL CEILING PANEL: 2" THICK MANUFACTURER: BASIS OF DESIGN: KOROSEAL STYLE: SOUND DESIGNS PERFORMANCE SERIES FABRIC: FR701 - SILVER NEUTRAL NOTE: ALT MANUF: KINETICS & SOUND SEAL	
ACT-4: ACOUSTICAL CEILING PANEL: 2" THICK MANUFACTURER: BASIS OF DESIGN: KOROSEAL STYLE: SOUND DESIGNS PERFORMANCE SERIES FABRIC: FR701 - FLANNEL NOTE: ALT MANUF: KINETICS & SOUND SEAL	
ACT-5: ACOUSTICAL CEILING PANEL: 2" THICK MANUFACTURER: BASIS OF DESIGN: KOROSEAL STYLE: SOUND DESIGNS PERFORMANCE SERIES FABRIC: FR701 - CLARET ACCENT NOTE: ALT MANUF: KINETICS & SOUND SEAL	
098433 INTERIOR PAINT	
P-1: FIELD - INTERIOR PAINT MANUFACTURER: SHERWIN-WILLIAMS COLOR: SW 7008 - ALPASTER FINISH: PER PAINT SPEC NOTE:	
P-2: CEILING - INTERIOR PAINT MANUFACTURER: SHERWIN-WILLIAMS COLOR: SW 6258 - TRICORN BLACK FINISH: PER PAINT SPEC NOTE:	
098200 ACOUSTICAL WALL PANELS - ALTERNATE 1	
WP-1: ACOUSTICAL WALL PANEL: 1.5" THICK MANUFACTURER: BASIS OF DESIGN: KOROSEAL STYLE: SOUND DESIGNS PERFORMANCE PLUS SERIES FABRIC: BEEHAVE - BLACK NOTE: SEE A421 FOR SIZING ALT MANUF: KINETICS & SOUND SEAL	
WP-2: ACOUSTICAL WALL PANEL: 1.5" THICK MANUFACTURER: BASIS OF DESIGN: KOROSEAL STYLE: SOUND DESIGNS PERFORMANCE PLUS SERIES FABRIC: BEEHAVE - SLATE NOTE: SEE A421 FOR SIZING ALT MANUF: KINETICS & SOUND SEAL	
096519 RESILIENT TILE FLOORING - ALTERNATE 2	
LVT-1: LVT PLANK; 7" x 48", 20 MIL MANUFACTURER: SHAW CONTRACT COLLECTION: BRANCHING OUT CORETEC 20 MIL STYLE: 4309V COLOR: PINECONE OAK 56720 NOTE: STAGGER LAYOUT, EXOGUARD+ FINISH, SHAW 4151 ADHESIVE	
096530 RESILIENT WALL BASE - ALTERNATE 2	
RB-1: RESILIENT WALL BASE: 4" H MANUFACTURER: JOHNSONITE STYLE: TRADITIONAL 4" DC COLOR: BURNT UMBER B TOE STYLE: COVE NOTE:	

PAINT SPECIFICATION

- A. BASIS OF DESIGN MANUFACTURER: SHERWIN WILLIAMS. ALSO ACCEPTABLE: BENJAMIN MOORE AND PPG PAINTS.
- B. PAINT SYSTEMS:
 - a. GYPSUM BOARD AND PLASTER: NEW & PREVIOUSLY PAINTED.
 - PRIMER: PROMAR 200 ZERO VOC INTERIOR LATEX PRIMER, B28 SERIES.
 - INTERMEDIATE COAT: MATCH TOPCOAT.
 - TOPCOAT: PROMAR 200 ZERO VOC INTERIOR LATEX EG-SHEL, B20.
 - b. CMU: PREVIOUSLY PAINTED.
 - LOXON CONCRETE AND MASONRY PRIMER LX02 SERIES
 - INTERMEDIATE COAT: MATCH TOPCOAT.
 - TOPCOAT: PROMAR 200 ZERO VOC INTERIOR LATEX EG-SHEL, B20.
 - c. EXISTING ACOUSTICAL CEILING TILES AND GRID
 - PRIMER: PROMAR 200 ZERO VOC INTERIOR LATEX PRIMER, B28 SERIES.
 - INTERMEDIATE COAT: MATCH TOPCOAT.
 - TOPCOAT: PROMAR 200 ZERO VOC INTERIOR LATEX FLAT, B30 SERIES.
- C. COLORS: REFER TO INTERIOR FINISH SCHEDULE.

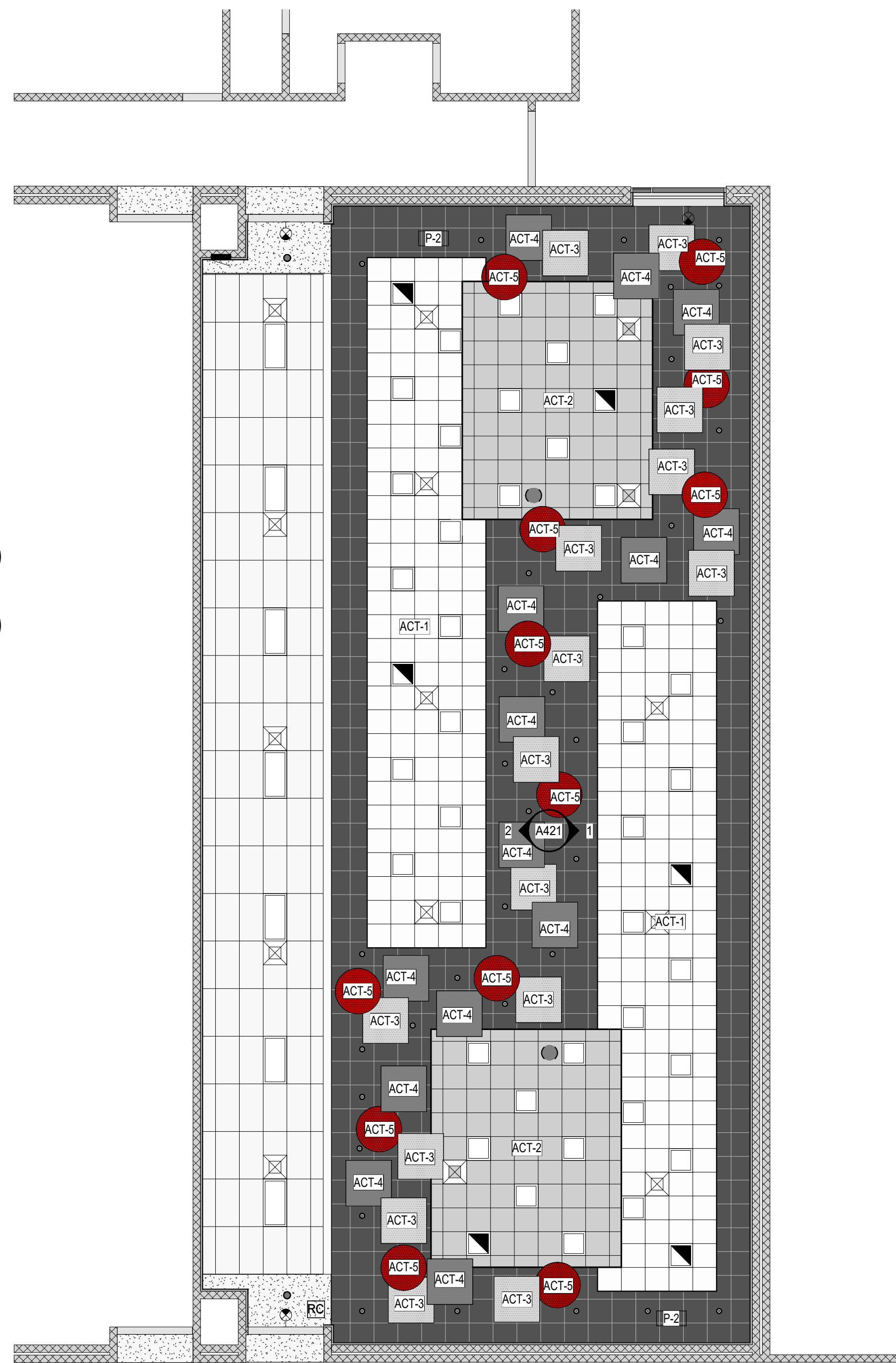
ROOM FINISH SCHEDULE									
ROOM NUMBER	ROOM NAME	FLOOR	BASE	WALLS				CEILING	REMARKS
				NORTH	SOUTH	EAST	WEST		
1ST FLOOR	CAFETERIA	LVT-1	RB-1	P-1	P-1	P-1	P-1	EX CEILING AT ELEVATION 16'-0" TO BE PAINTED P-2	FLOOR AND BASE ARE PART OF ALTERNATE 2

GENERAL NOTES

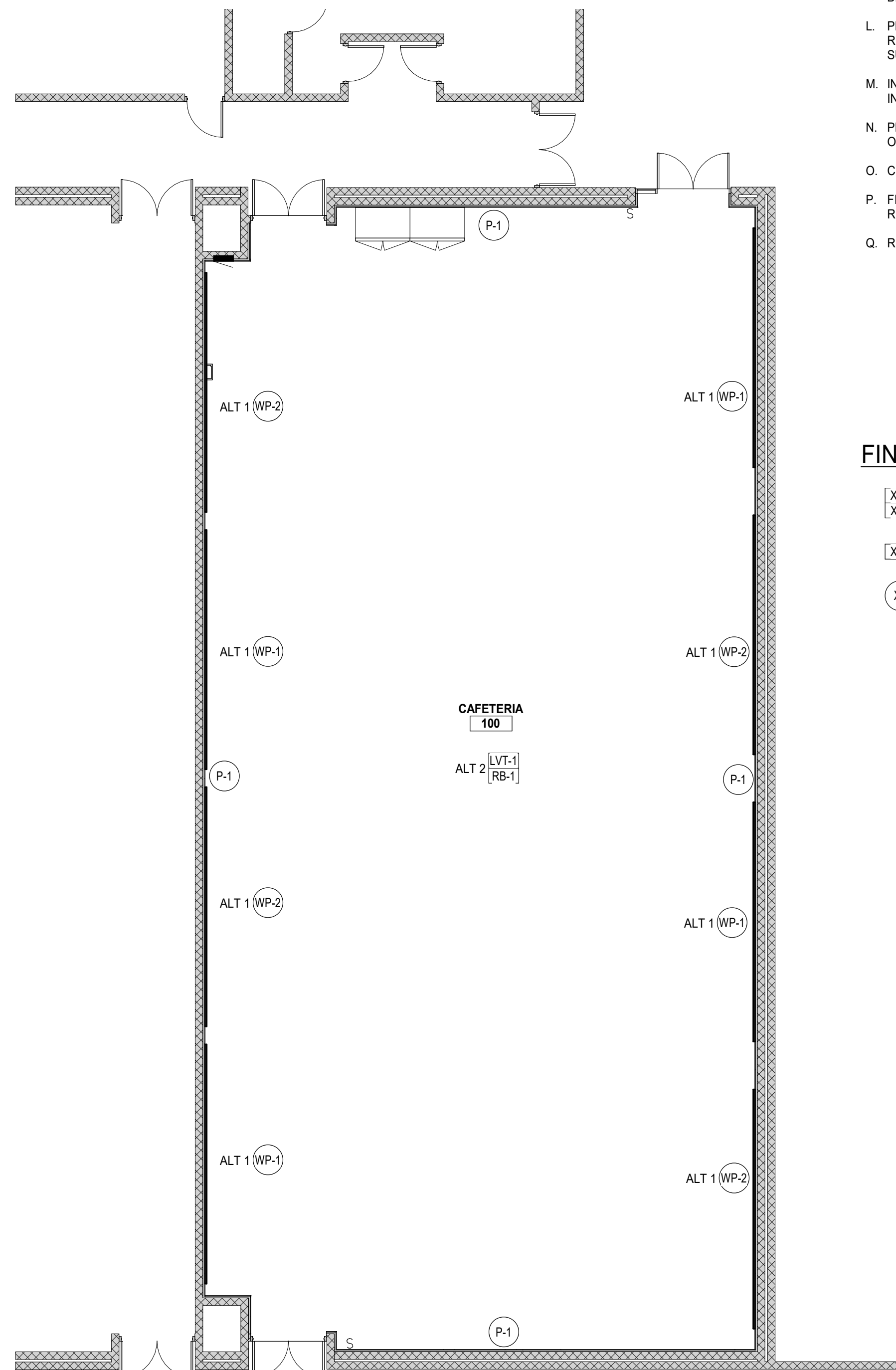
- A. COMPLY WITH MANUFACTURER'S RECOMMENDATIONS FOR PREPARING AND INSTALLING FINISHES.
- B. PROTECT ADJACENT WORK BY SUITABLY COVERING DURING WORK.
- C. REMOVE ADHESIVE OR PAINT SPOTS FROM FINISHED FLOORS, WALLS, GLASS OR OTHER SURFACES. FINISHES TO MEET OR EXCEED CODE REQUIREMENTS.
- D. INSTALL MATERIALS USING MANUFACTURER'S APPROVED ADHESIVES AND METHODS, U.O.N.
- E. FILL MINOR DRYWALL IRREGULARITIES WITH SPACKLING COMPOUND AND SAND TO A SMOOTH LEVEL SURFACE. EXERCISE CARE TO AVOID RAISING THE NAP OF PAPER.
- F. DO NOT PERFORM PAINTING AND OTHER FINISHING WORK UNDER CONDITIONS UNSUITABLE FOR EXECUTION OF PAINTING WORK. AIR SHALL BE FREE FROM DUST AND DIRT TO PREVENT LODGING OF FOREIGN MATTER IN FRESH PAINT. FLOORS MUST BE BROOM CLEAN BEFORE PAINTING IS STARTED.
- G. PAINT DESIGNATIONS INDICATE COLOR ONLY, REFER TO SPECIFICATION FOR FINISH TYPE.
- H. EDGES OF PAINT ADJOINING OTHER COLORS OR MATERIALS TO BE SHARP AND CLEAN WITHOUT OVERLAP.
- I. EXAMINE SURFACES TO RECEIVE PAINT CAREFULLY FOR DEFECTS. DO NOT PROCEED WITH WORK UNTIL DEFECTS ARE CORRECTED.
- J. WHENEVER NECESSARY TO OBTAIN REQUIRED RESULTS, REFINISH AN ENTIRE WALL RATHER THAN SPOT FINISHING WHERE A PORTION OF THE FINISH HAS BEEN DAMAGED OR IS UNSATISFACTORY.
- K. PREPARE FLOOR SURFACES INCLUDING, BUT NOT LIMITED TO, THE FOLLOWING:
 - A. PREPARE/PROPERLY REPAIR AND PATCH SUBFLOORS TO A SMOOTH AND LEVEL FINISH.
 - B. FLASH PATCH AS REQUIRED, READY TO RECEIVE NEW FINISH.
- L. PROVIDE SELF LEVELING TROWELABLE UNDERLAYMENT WHERE REQUIRED TO OBTAIN FINISH MANUFACTURER'S REQUIRED SUBFLOOR CONDITION.
- M. INSTALL TILE PER THE TILE COUNCIL OF NORTH AMERICA'S INSTALLATION SPECIFICATIONS.
- N. PROVIDE THE REQUIRED TRANSITIONS BASED ON TYPES IDENTIFIED ON DRAWINGS AT EACH FINISH TRANSITION LOCATION.
- O. CENTER FLOOR MATERIAL TRANSITIONS ON DOOR ABOVE.
- P. FINISHED FLOORS EXTEND INTO TOE SPACES, CLOSETS, DOOR REVEALS AND SIMILAR OPENINGS.
- Q. REFER TO REFLECTED CEILING PLANS FOR CEILING FINISHES.

FINISH SYMBOL LEGEND

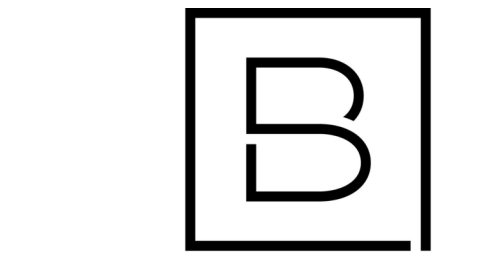
- XX# ← FLOOR FINISH
- XX# ← WALL BASE FINISH
- XX# ← FLOOR FINISH ONLY
- X# ← GENERAL WALL FINISH



2 FIRST FLOOR FINISH RCP
SCALE: 1/8" = 1'-0"



1 FIRST FLOOR FINISH PLAN
SCALE: NTS



BERGMANN
ARCHITECTS ENGINEERS PLANNERS

560 5th St. NW
Suite 305
Grand Rapids, MI 49504

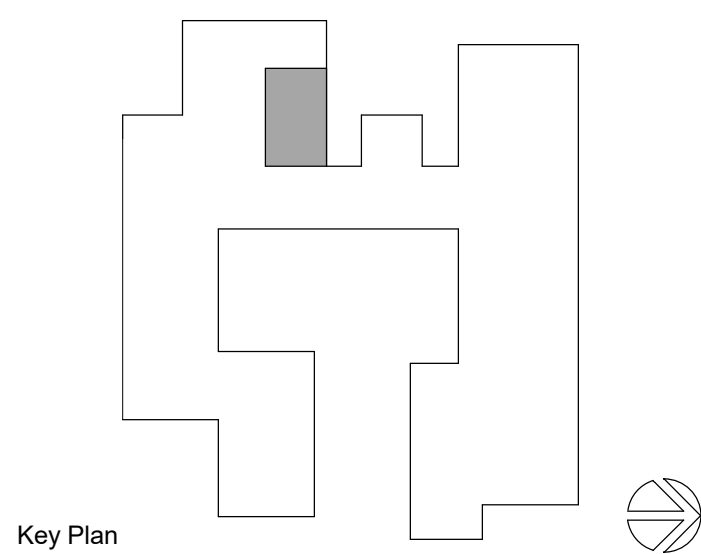
www.bergmannpc.com

**ORCHARD VIEW
SCHOOL
DISTRICT**

**CARDINAL
ELEMENTARY
CAFETERIA
ACOUSTICAL
TREATMENT**

2310 MARQUETTE AVE
MUSKEGON, MI 49442

Date Revised	Description
1/24/2023	OWNER REVIEW
1/31/2023	BIDS
2/7/2023	PERMITS
2/15/2023	ADDENDUM #1



Key Plan

Copyright © Bergmann Associates, Architects, Engineers, Landscape Architects & Surveyors, D.P.C.

Project Manager	Discipline Lead
D. HOLTROP	B. HUYLER
Designer	Reviewer
E. POST	R. KEUNEKE
Date Issued	Project Number
2/15/2023	22013310A

Sheet Name

FIRST FLOOR FINISH PLAN

Drawing Number

A141